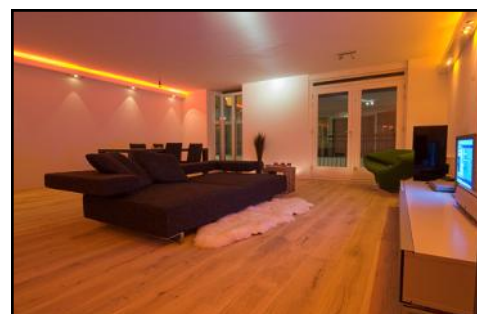
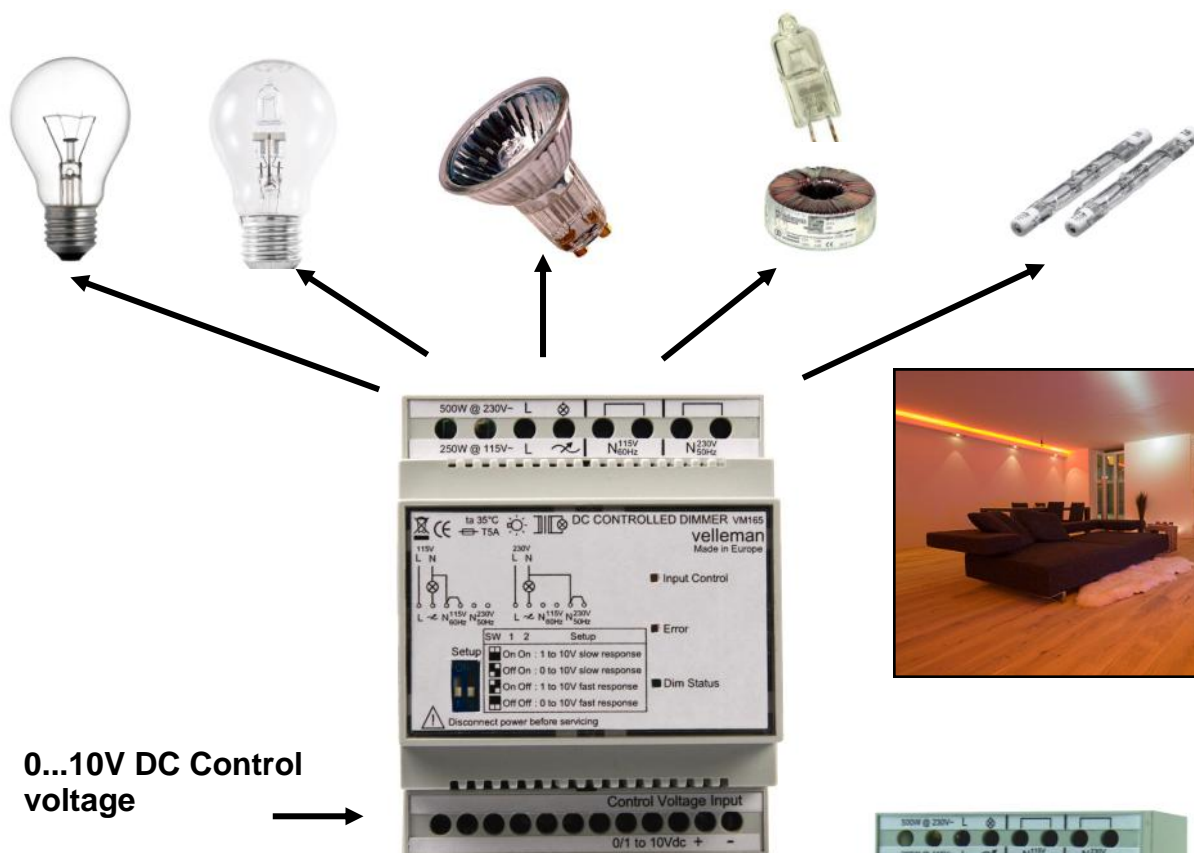


# 0...10V DC CONTROLLED DIMMER

**VM165**


## Characteristics:

- ☑ Brightness control using DC voltage.
- ☑ Galvanic isolated input.
- ☑ Suitable for incandescent lamps, mains voltage halogen lighting and low voltage halogen lighting in combination with a conventional transformer.
- ☑ Transformer protection in case of defective light sources.
- ☑ LED status indicators.
- ☑ Can be used with our computer interfaces: K8061(kit) or VM140 (assembled), or upcoming VMB4DC Velbus® control module.



## Specifications:

- Adjustment voltage of 0 to 10Vdc or 1 to 10Vdc (max 2mA)
- Suppression of radio & TV interference according to EN55015.
- Operating voltage: 115 or 230VAC- 50/60Hz.
- Max. load: 500W @ 230V or 250W @ 115V.
- Max. phase shift with inductive load: 30°.
- Standard DIN-rail housing : 4 modules.
- Dimensions: 90 x 71 x 58mm / 3.5 x 2.8 x 2.3"
- Weight: 220g.