



## Home center 2.7.3+ IR commands



The IR interface functionality is available exclusively on the Home center interface Server (VMBHIS or HIS)

Revision 03-08-2015

More info <http://www.homecenter.be>

# Table of Contents

1 Basic concept .....	3
2 Getting started .....	3
2.1 Install Global Caché device .....	3
2.2 Capture IR commands .....	3
2.3 Add IR commands in Home center .....	5
2.4 Link the IR command to a button .....	8

# 1 Basic concept

---

Configure Home center to send out IR codes through IR devices of [Global Caché](#).



This adds a whole new dimension to your Home automation system. It is possible to operate devices in your home which are not connected to your Home automation system. Operate IR enabled ventilation, shades, air-conditioner, decoder, TV, amplifier,... with your Home automation systems inputs.

## 2 Getting started

---

For the devices you want to operate you will need to capture the IR commands you want to use and put them in the IR interface of Home center.

### 2.1 Install Global Caché device

Connect the Global Caché iTach Flex device to your home network.

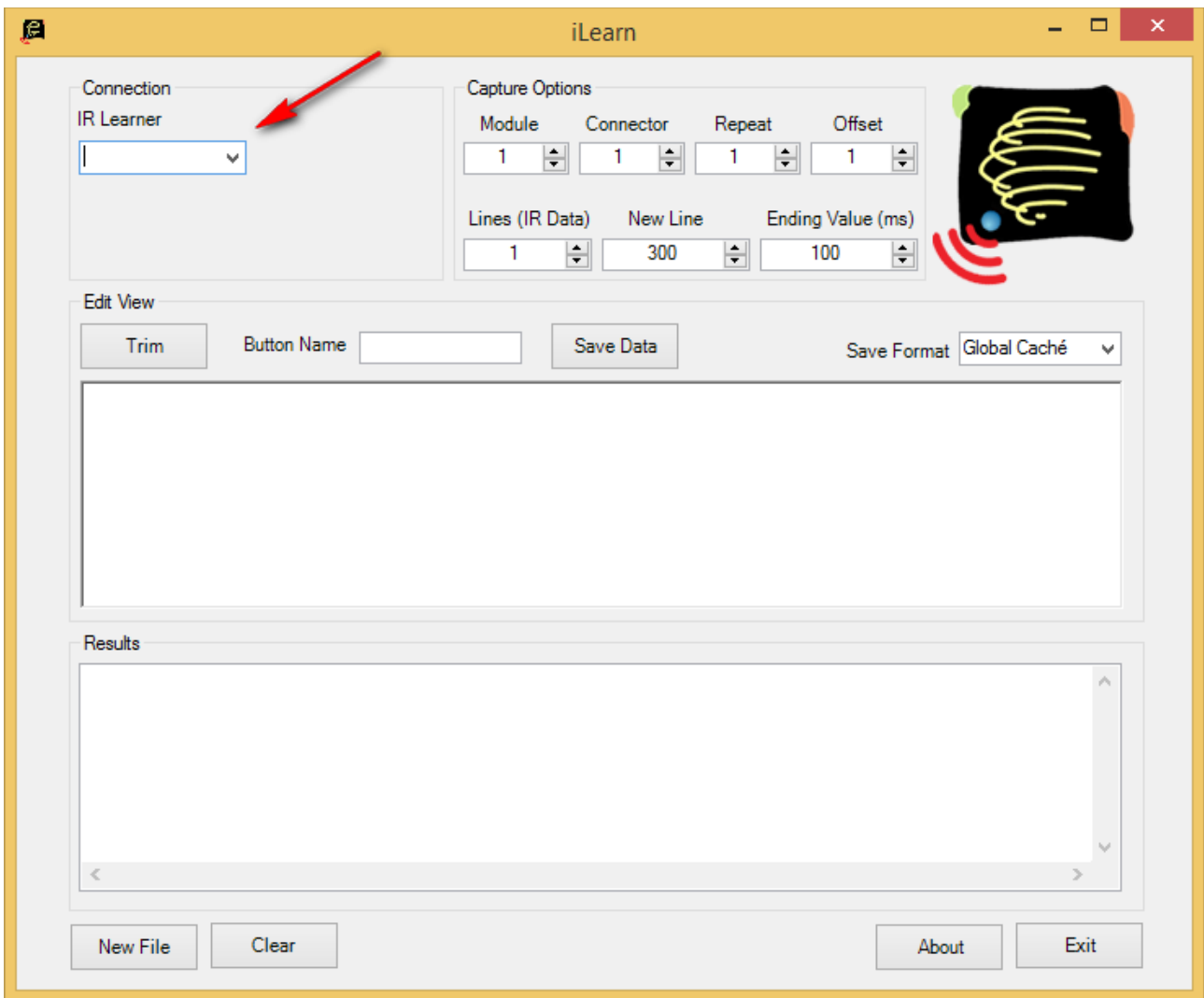
To help you locate the device in your network, you can use the **iHelp** tool from Global Caché. Download the iHelp tool from <http://www.globalcache.com/downloads/>

How to configure the device is described in the manuals of Global Caché.

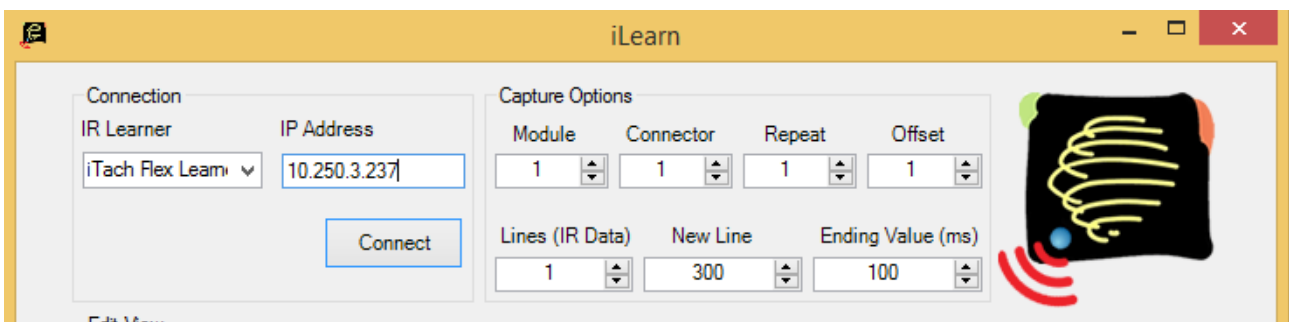
### 2.2 Capture IR commands

For this you require the **iLearn** tool from Global Caché. Download the iLearn tool from <http://www.globalcache.com/downloads/>

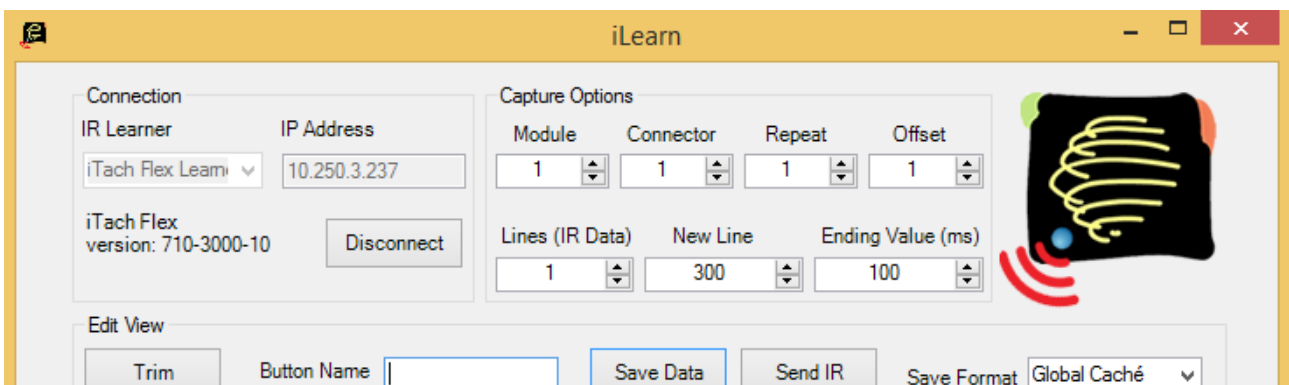
Start with selecting the IR Learner from the drop down.



Then fill in the IP address of the device and press Connect.



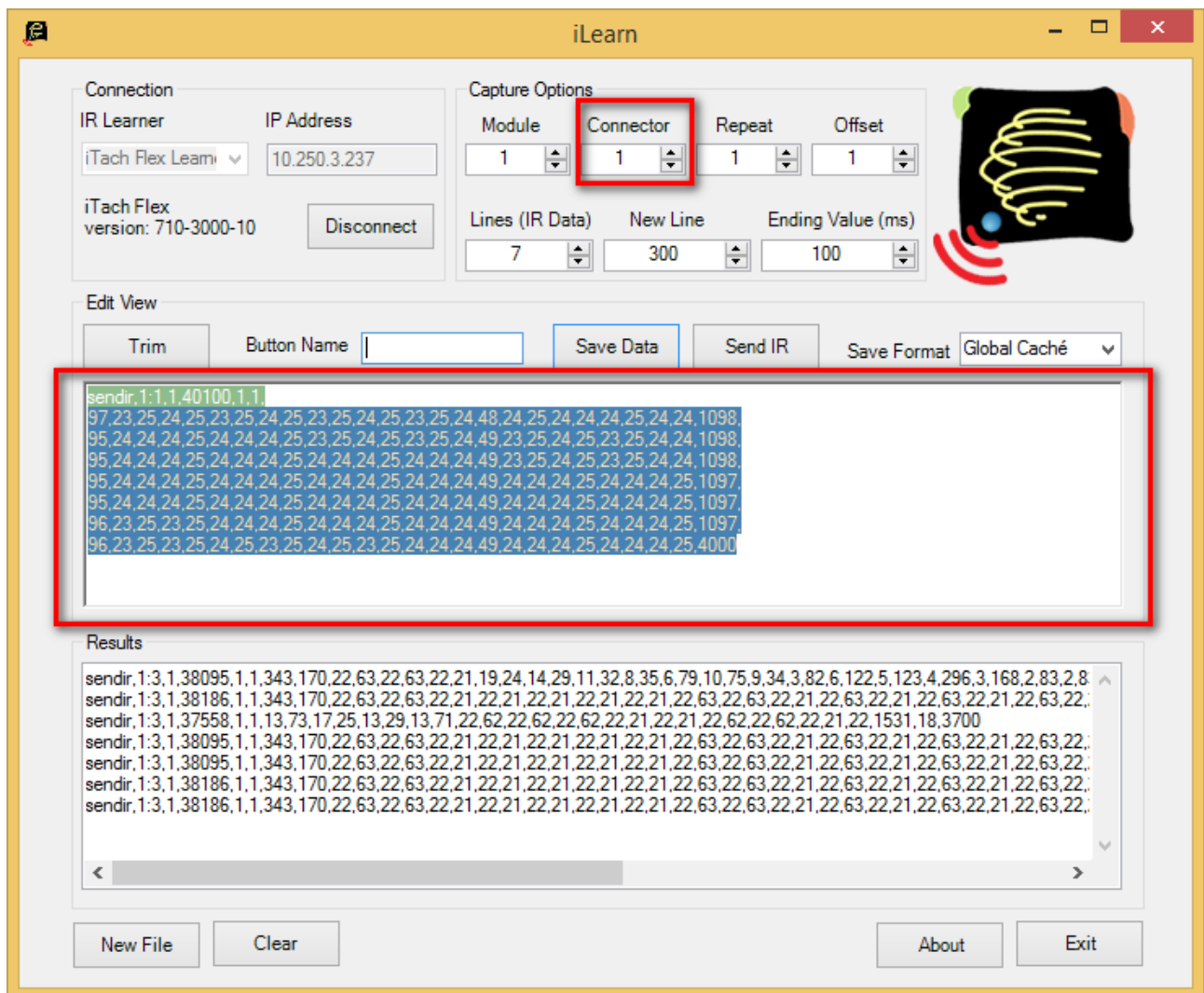
If the connection succeeded, the device type and version will be visible:



Now you can start reading the codes.

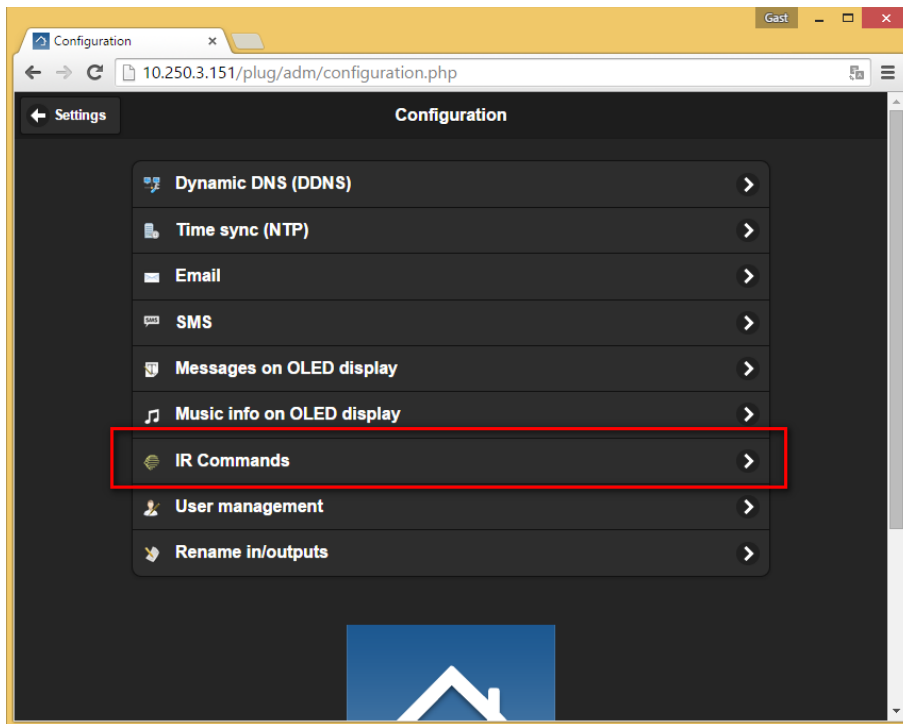
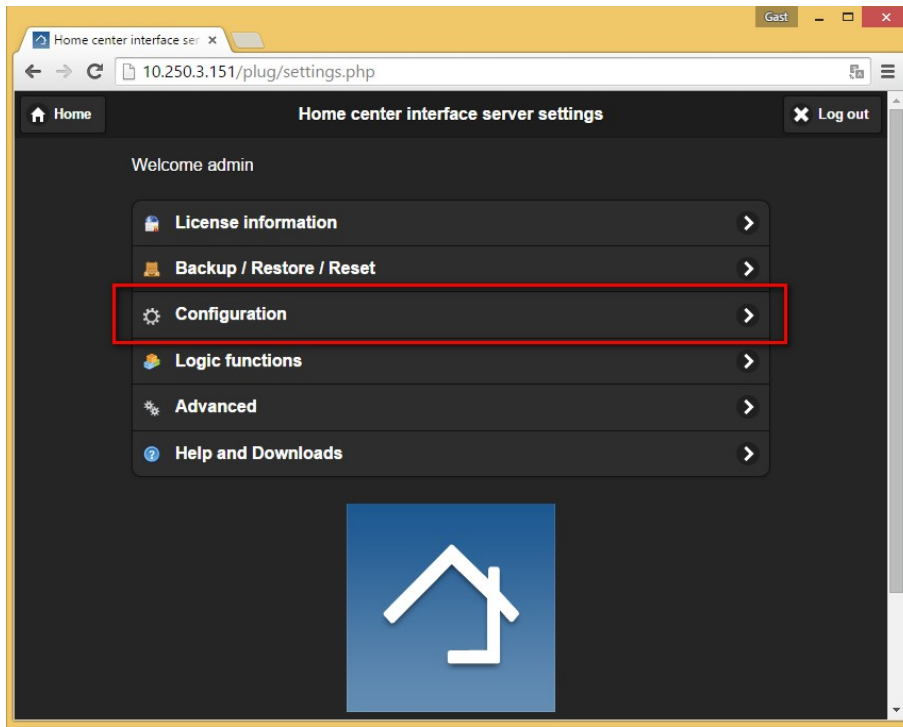
Point the remote control to the IR input of the iTach/iTach Flex and press the button you want to read. The IR code will appear on the center of the screen. This data must be entered in the Home center IR commands. But first, maybe you want to adjust the Connector to where the command must be sent. Adjusting this value will change the green part of the command. When this is done, the command is complete and ready to be entered in the Home center IR interface.

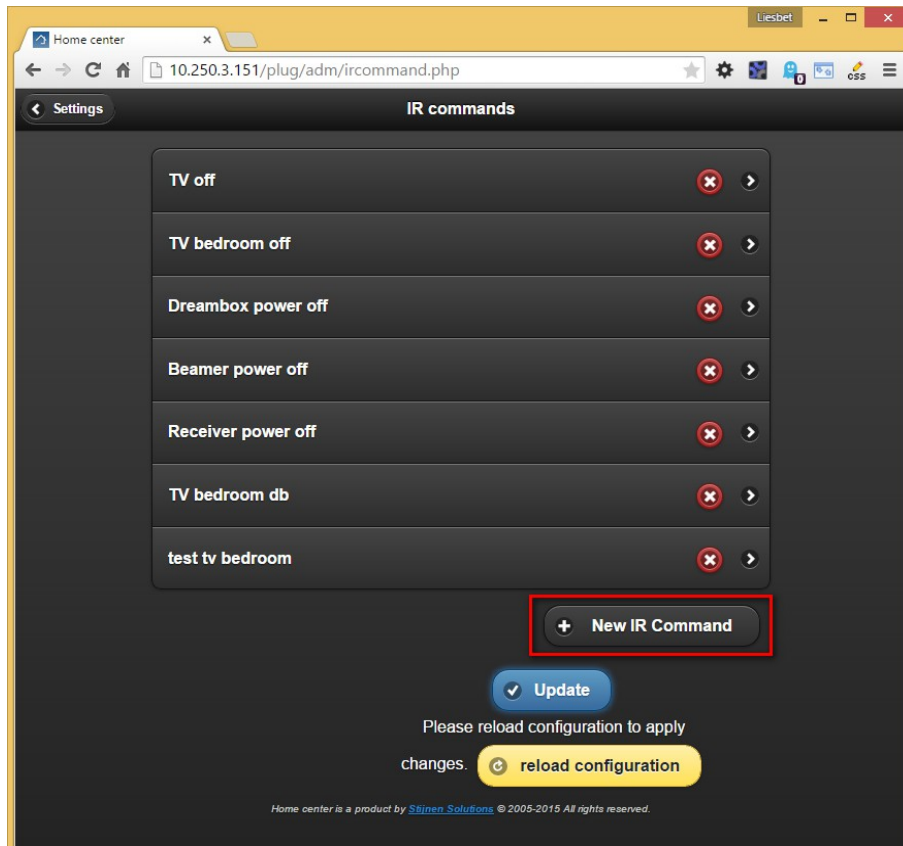
Proceed to the Home center web interface.



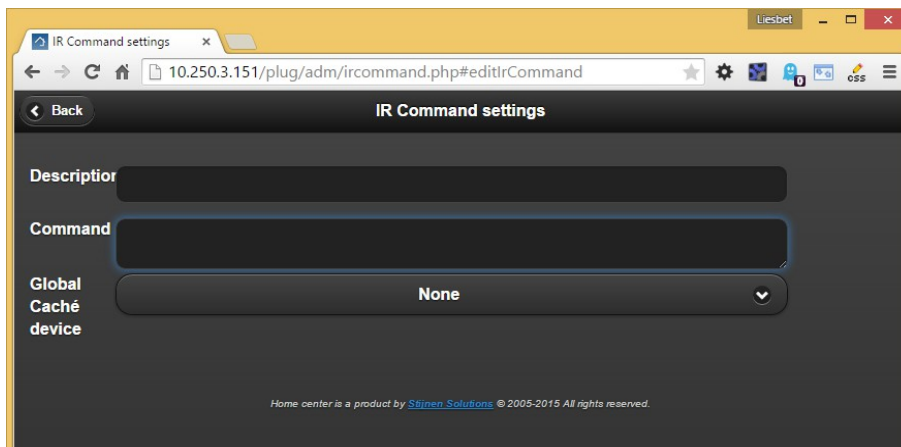
## 2.3 Add IR commands in Home center

Log in to Home center web interface and open the settings page. Select 'Configuration' and then 'IR Commands'. Press the 'New IR Command' button to add a new command.

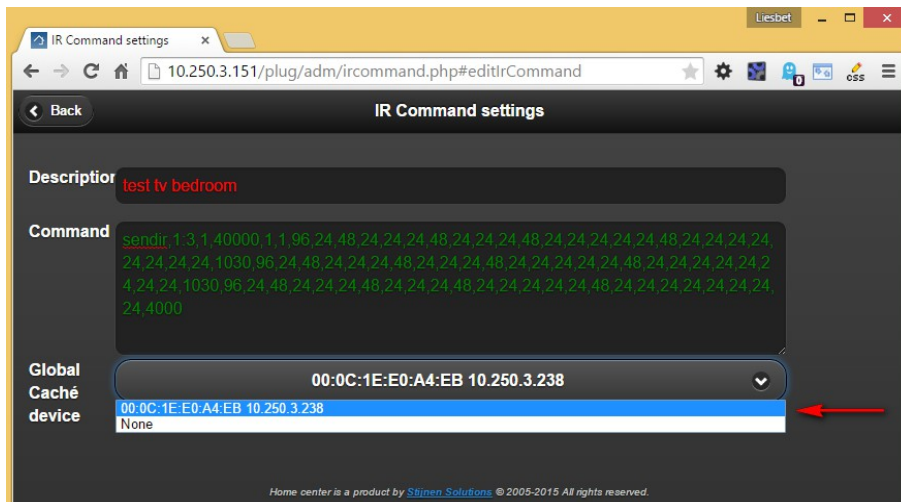




An empty command screen will appear.



- Add a description to identify the IR command
- Use copy & paste from the iLearn program to add the command in the command box.
- Select the Global Caché device from the drop down box to which the command must be send.



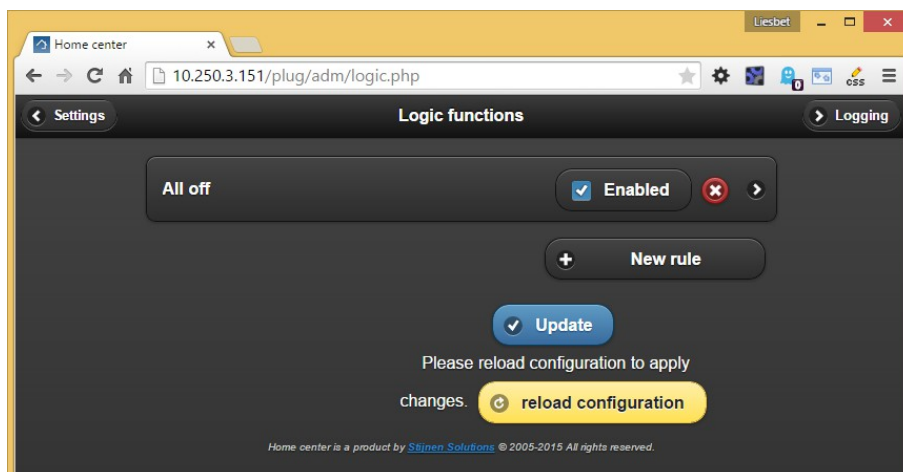
Press the 'Back' button and then press 'Update' to save the changes.  
 Now the command is added in Home center.

## 2.4 Link the IR command to a button

Now you need add a Logic rule to link the IR command to a button of the Home automation system.

For this we need to go to the Logic interface on the settings page.

Create a rule or add the command to an existing rule. For instance the 'All Off' rule to also turn off the TV in the bedroom.



How the Logic module works and needs to be configured, please see the Logic guide of Home center.



